



MULRANNY PARK
HOTEL



www.MULRANNYPARKHOTEL.ie



Welcome to the Mulranny Park Hotel...



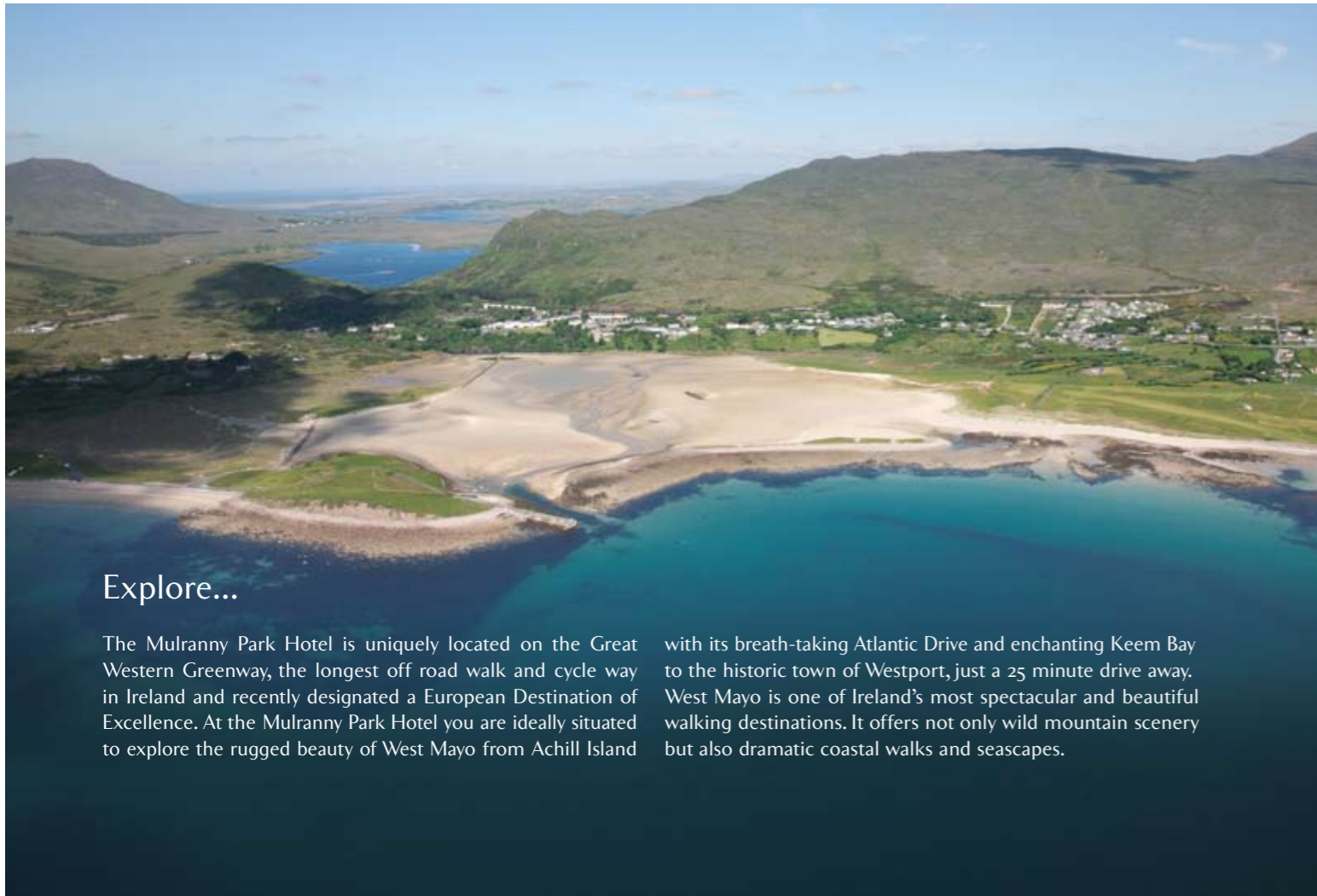
Discover...

In a unique landscape where rock, ocean, hills and fields merge together in every vista, this is where you catch your very first glimpse of the 4* Mulranny Park Hotel. Nestled within a beautiful woodland estate overlooking Clew Bay, the Mulranny Park Hotel exudes not just old world charm and elegance but offers every visitor the very warmest of welcomes.

The doors of our historic hotel first opened in 1897 after completion by the Midland Great Western Railways. It soon became a key destination on the Westport to Achill route for both domestic and international travellers.

The Mulranny estate covers 42 acres of forest perched above the glittering waters of the Atlantic ocean. Visitors are accommodated in rooms and seaview apartment suites designed for exceptional comfort in a luxuriously contemporary style. Our award-winning Nephin Restaurant and Waterfront Bar with sun terrace are deliberately positioned to take full advantage of the spectacular views of Clew Bay and Clare Island.

A unique causeway built in 1900 joins the hotel to a superb local blue-flag beach. Apart from the breath-taking scenery of County Mayo, the Mulranny Park Hotel is the perfect starting point for exploring the multitude of activities available in the area, including walking and cycling on the Great Western Greenway, golf, horse riding, a range of watersports and many many more.



Explore...

The Mulranny Park Hotel is uniquely located on the Great Western Greenway, the longest off road walk and cycle way in Ireland and recently designated a European Destination of Excellence. At the Mulranny Park Hotel you are ideally situated to explore the rugged beauty of West Mayo from Achill Island

with its breath-taking Atlantic Drive and enchanting Keem Bay to the historic town of Westport, just a 25 minute drive away. West Mayo is one of Ireland's most spectacular and beautiful walking destinations. It offers not only wild mountain scenery but also dramatic coastal walks and seascapes.



Explore the beauty of the Mayo countryside on horseback and feel the wind in your hair as you gallop across one of Achills' stunning beaches. If you prefer to keep your feet on the ground, you're never far from a superb, championship golf course – there is a wonderful 9 hole course located in the village of Mulranny. Watersports abound on the peninsula with kayaking, sailing, diving and some of Ireland's best surfing destinations. Angling enthusiasts will find superb sea and game fishing. With blue flag beaches, dramatic coastlines, stunning mountains, colourful villages and a wealth of activities, at the Mulranny Park Hotel – there's so much to explore.

Wild Woolies Kids Club

Regarded as one of the best family hotels in Ireland by the Irish Independent, children are guaranteed fun and action-packed days, regardless of the weather. From Kid's check in area to our special food for kids programme they will want to come back for more. During the summer and school holidays, the Wild Woolies Kids Club offers a multitude of activities for children of all ages. With kid's disco's, cupcake decorating, games, shell hunts, nature walks, art, pottery design, t-shirt design, and so much more, it is not the standard kids club! Guaranteed happy children!

Savour...

Our award-winning Nephin Restaurant is an experience you won't soon forget. Our Head Chef uses only the very finest ingredients to create menus that will tantalise your palate. A beautiful, spacious dining room is illuminated by the dramatic views of Clew Bay through its bay windows. Here, you will enjoy a level of individual service and attention to detail that leaves nothing for you to do except savour the food, the wine and an evening like no other.

The Gourmet Greenway food trail has been devised by the Mulranny Park Hotel in association with several Mayo food producers to showcase the wonderful artisan foods along the

Great Western Greenway. We encourage you to visit and experience the producers along the Gourmet Greenway using our trail map or taste the local produce on our daily designed menus.

Whenever you're in the mood for more casual dining, you'll be pleasantly surprised by the Waterfront Bar. Here, you'll find freshly prepared, scrumptious pub fare with hearty soups, homemade dishes, delicious salads, catch of the day and tasty specials. With a sun terrace overlooking the bay, it's no wonder the Waterfront Bar is so popular with both guests and locals alike.



Relax...

Bedrooms

Rooms at the 4* Mulranny Park Hotel have been designed for exceptional comfort and relaxation. The style is fresh and contemporary with furnishings and decor inspired by the immediate woodland surroundings. There's a choice of room types and all have tea and coffee making facilities, telephone, TV, hair dryer and WiFi internet access.

We've retro-styled one of our rooms – the John Lennon Suite in memory of John Lennon of The Beatles who stayed at the hotel in the 1960's. For those celebrating their wedding, we have two exquisite Bridal Suites available especially for you.

Seaview Apartments

Our fully serviced seaview apartment suites are adjacent to the hotel and have been beautifully designed with their own patios or balconies, providing stunning views of the bay and mountains. Each two bed seaview apartment has a double room and a twin bedded room with a shared spacious bathroom. The comfortable lounge with stunning views has a small kitchenette with hob, microwave and fridge. The sofa bed in the lounge converts to a third bed for one adult or two children. They are ideal for families, groups or visitors for whom extra space, comfort and privacy are a must.

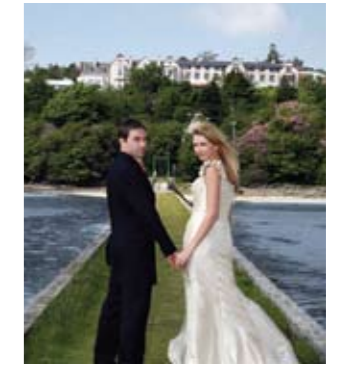




Revitalise...

The magic of the Mulranny Park Hotel is that you don't even have to leave the grounds to achieve the rejuvenation you've been looking for. Everything is here on site in our Leisure Centre. Submerge yourself in the 20m swimming pool which is filled with natural light and covered by a superb natural wood ceiling. Ease those tired muscles in the Jacuzzi or venture outdoors to experience the unique, relaxing sensations of our Canadian hot tub.

Relax in our Sauna or in the beautifully designed Steam Room. Follow this with a dip in the chilled Plunge Pool to truly awaken your senses. To keep you in top condition, every fitness level and regime is catered for in our high-tech Gym with fully qualified instructors on hand for guidance and encouragement. You can also take advantage of a range of health and beauty treatments in the onsite Mulranny Health & Beauty Salon & Hairdresser.



Celebrate...

Celebrations are a part of everyone's life. Memories are made not only by how you celebrate but where – the Mulranny Park Hotel is second to none when the venue for your event means so much.

An unique setting for even the most elaborate of feasts, the Granuaile Suite is ideal for weddings, banquets, events and parties of all sizes. It is a space that offers natural light and a breathtaking view of Clew Bay.

The room can be configured according to the size required and can easily accommodate up to 320 guests. We have a dedicated Wedding and Events Manager to assist you with planning everything down to the very smallest detail, so that you and your guests will enjoy an unforgettable experience together. The Mulranny Park Hotel is an approved venue for civil wedding services.

“Our wedding day simply could not have been better – no other venue could rival it. Aside from the fabulous location with amazing views, the service and attention to detail on the day was outstanding. The room and the tables looked absolutely stunning and this was only enhanced by the view of Clew Bay. All guests were extremely impressed by the quality of the food and the exceptionally friendly and efficient service. We really would recommend the Mulranny Park to anyone.”
– Aisling Wall & Paul Kinneen

The Great Outdoors...

The Great Western Greenway has been designated a European Destination of Excellence, establishing it as one of the finest trails in Europe. The Greenway which runs by the hotel is a wonderful facility for walkers and cyclists alike, following the track of the famous Westport to Achill railway which closed in 1937. The Greenway is the longest off-road (42km) walking and cycling trail in Ireland passing through some of the most stunning scenery in the West of Ireland. Take a packed lunch and head off walking at your own pace or hire a bike and enjoy the trail on two wheels. Aside from the essentials, one of the most vital pieces of equipment is your camera to capture the stunning scenery!

West Mayo is one of Ireland's most spectacular and beautiful walking destinations. The vast Nephin Mountain Range and the iconic seascape of Clew Bay, with its drowned drumlin islands, provide spectacular views and ever changing hues. Mayo is a county of great geographical contrasts, offering walkers a quality of terrain that few places can compete with. The village of Mulranny lies on an isthmus, a convergence of land and sea, a crossroads of marine and terrestrial habitats. Such is the quality of environment here that a trio of European conservation areas and Ireland's largest National Park converge on Mulranny. The landscape here has many stories to tell.





MULRANNY PARK HOTEL

Experience the Drama of West Mayo



www.MULRANNYPARKHOTEL.ie

Mulranny Park Hotel, Mulranny, Westport, Co. Mayo, Ireland
 Tel +353 98 36 000 Fax +353 98 36 899 Reservations 1850 336 000 Email info@mulrannyparkhotel.ie



printed on paper from a sustainable source